



OPEN

SUBJECT AREAS:

ULTRACOLD GASES

SPINTRONICS

THEORETICAL PHYSICS

SYNTHESIS OF GRAPHENE

Topological Quantum Phase Transition in Synthetic Non-Abelian Gauge Potential: Gauge Invariance and Experimental Detections

Fadi Sun^{1,2*}, Xiao-Lu Yu^{1*}, Jinwu Ye^{2,3*}, Heng Fan^{1*} & Wu-Ming Liu^{1*}Received
2 April 2013Accepted
13 June 2013Published
12 July 2013Correspondence and
requests for materials
should be addressed to
F.S. (fs306@msstate.
edu)* These authors
contributed equally to
this work.

¹Beijing National Laboratory for Condensed Matter Physics, Institute of Physics, Chinese Academy of Sciences, Beijing 100190, China, ²Department of Physics and Astronomy, Mississippi State University, P. O. Box 5167, Mississippi State, MS 39762, USA, ³Beijing Key Laboratory for Terahertz Spectroscopy and Imaging, Key Laboratory of Terahertz Optoelectronics, Ministry of Education, Department of Physics, Capital Normal University, Beijing 100048, China.

The method of synthetic gauge potentials opens up a new avenue for our understanding and discovering novel quantum states of matter. We investigate the topological quantum phase transition of Fermi gases trapped in a honeycomb lattice in the presence of a synthetic non-Abelian gauge potential. We develop a systematic fermionic effective field theory to describe a topological quantum phase transition tuned by the non-Abelian gauge potential and explore its various important experimental consequences. Numerical calculations on lattice scales are performed to compare with the results achieved by the fermionic effective field theory. Several possible experimental detection methods of topological quantum phase transition are proposed. In contrast to condensed matter experiments where only gauge invariant quantities can be measured, both gauge invariant and non-gauge invariant quantities can be measured by experimentally generating various non-Abelian gauges corresponding to the same set of Wilson loops.

A wide range of atomic physics and quantum optics technology provide unprecedented manipulation of a variety of intriguing quantum phenomena. Recently, based on the Berry phase¹ and its non-Abelian generalization², Spielman's group in NIST has successfully generated a synthetic external Abelian or non-Abelian gauge potential coupled to neutral atoms. The realization of non-Abelian gauge potentials in quantum gases opened a new avenue in cold atom physics^{3–10}. It may be used to simulate various kinds of relativistic quantum field theories^{11,12}, topological insulators^{13,14}, graphene^{15,16}, and it may also provide new experimental systems in finding Majorana fermions^{17,18}.

Recently, there have been some experimental^{19,20} and theoretical activities^{21–23,42,43} in manipulating and controlling of ultracold atoms in a honeycomb optical lattice. Bermudez *et al.*²⁴ studied Fermi gases trapped in a honeycomb optical lattice in the presence of a synthetic $SU(2)$ gauge potential. They discovered that as one tunes the parameters of the non-Abelian gauge potential, the system undergoes a topological quantum phase transition (TQPT) from the $N_D = 8$ massless Dirac zero modes phase to a $N_D = 4$ phase. However, despite this qualitative picture, there remain many important open problems. In this work, we address these important problems. We first determine the phase boundary in the two parameters of the non-Abelian gauge potential, and provide a physical picture to classify the two different topological phases and the TQPT from the magnetic space group (MSG) symmetry^{21,22,25,42,43}. Then we develop a systematic fermionic effective field theory (EFT) to describe such a TQPT and explore its various important experimental consequences. We obtain the critical exponents at zero temperature which are contrasted with a direct numerical calculation on a lattice scale. We derive the scaling functions for the single particle Green function, density of states, dynamic compressibility, uniform compressibility, specific heat and Wilson ratio. A weak short-ranged atom-atom interaction is irrelevant near the TQPT, but the disorders in generating the non-Abelian gauge fields are relevant near the TQPT. We especially distinguish gauge invariant physical quantities from non-gauge invariant ones. When discussing various potential experimental detections of the topological quantum phase transition, we explore the possibilities to choose different gauges to measure both gauge invariant and non-gauge invariant physical quantities. We stress the crucial differences between the TQPT discussed in this work and some previously known TQPTs.



Results

Wilson loops, topological phases and phase boundary. The tight-binding Hamiltonian for Fermi gases trapped in a two-dimensional (2D) honeycomb optical lattice in the presence of a non-Abelian gauge potential [Fig. 1(a)] is:

$$\mathcal{H}_0 = -t \sum_{\langle ij \rangle} c_A^\dagger(i\sigma) U_{ij}^{\sigma\sigma'} c_B(j\sigma') + h.c., \quad (1)$$

where t is the hopping amplitude, $\langle i, j \rangle$ means the nearest neighbors, and $c_A^\dagger(i\sigma), c_B^\dagger(i\sigma)$ ($c_A(i\sigma), c_B(i\sigma)$) create (annihilate) a fermion at site \mathbf{r}_i of A - and B -sublattice with spin σ . The unitary operator U is related to the non-Abelian gauge potentials \mathbf{A} by the Schwinger line integral along the hopping path $\mathcal{P} \exp\left(i \frac{e}{h} \int \mathbf{A} \cdot d\mathbf{l}\right)$. For simplicity, we choose a lattice translational invariant gauge [Fig. 1(a)] where the $U_{ij} = U_{i-j} \equiv U_\delta, \delta = 1, 2, 3$. In the momentum space, the Eq. (1) can be written²⁴ as $H = \sum_{\vec{k}} \Psi_a^\dagger(\vec{k}) H_{ab}(\vec{k}) \Psi_b(\vec{k})$ where a, b stands for the two sublattices A, B and also the two spin indices σ . In the specific gauge in Fig. 1(a), $U_1 = e^{i\alpha\sigma_x}, U_2 = 1$ and $U_3 = e^{i\beta\sigma_y}$, where the σ_x and σ_y are Pauli matrices in the spin-components (The more general case $U_1 = e^{i\alpha\sigma_x}, U_2 = e^{i\gamma\sigma_z}, U_3 = e^{i\beta\sigma_y}$ can be similarly discussed). The gauge invariant Wilson loop²⁴ around an elementary hexagon is $W(\alpha, \beta) = 2 - 4 \sin^2 \alpha \sin^2 \beta$ which stands for the non-Abelian flux through the hexagon. However, in contrast to the Abelian gauge case on a lattice^{21,22,42,43}, the $W(\alpha, \beta)$ is not enough to characterize the gauge invariant properties of the system. One need one of the three Wilson loops $W_{1,2,3}$ around the 3 orientations of two adjacent hexagons to achieve the goal. In the gauge in Fig. 1(a), $W_1(\alpha, \beta) = 2 - 4 \sin^2 2\alpha \sin^2 \beta, W_2(\alpha, \beta) = 2 - \sin^2 2\alpha \sin^2 2\beta,$ and $W_3(\alpha, \beta) = 2 - 4 \sin^2 \alpha \sin^2 2\beta$. The gauge invariant phase boundary in terms of W and W_1 is shown in Fig. 4(a). The $W = \pm 2$ and $|W| < 2$ correspond to Abelian regimes and non-Abelian regimes respectively. Only in the Abelian case $W_1 = W_2 = W_3 = 2$. The fact that $W_1 \neq W_2$ or $W_1 \neq W_3$ in the non-Abelian case shows that the $2\pi/3$ rotation symmetry around a lattice point (or $\pi/3$ symmetry around the center of the hexagon) is generally broken, even the translational symmetry is preserved by the non-Abelian gauge field. It is easy to see that the α is gauge equivalent to $\pi \pm \alpha$ and β is gauge equivalent to $\pi \pm \beta$, so we can restrict α and β in the region $[0, \pi]$. It is important to stress that in principle, the cold atom experiments³⁻¹⁰ can generate various gauges corresponding to the same W and $W_{1,2,3}$, so the gauge parameters α and β are experimentally adjustable. This fact will be important in discussing experimental detections of the TQPT.

The spectrum of \mathcal{H} consists of four bands given by

$$\epsilon_{1\pm}(\mathbf{k}) = \pm t \sqrt{b_{\mathbf{k}} - 2\sqrt{d_{\mathbf{k}}}}, \quad \epsilon_{2\pm}(\mathbf{k}) = \pm t \sqrt{b_{\mathbf{k}} + 2\sqrt{d_{\mathbf{k}}}}, \quad (2)$$

where the $b_{\mathbf{k}} = 3 + 2 \cos \alpha \cos(k_1 a) + 2 \cos \beta \cos[(k_1 + k_2)a] + 2 \cos \alpha \cos \beta \cos(k_2 a)$ and $d_{\mathbf{k}} = (1 - \cos^2 \alpha \cos^2 \beta) \sin^2(k_2 a) + \sin^2 \alpha \sin^2(k_1 a) - 2 \sin^2 \alpha \cos \beta \sin(k_1 a) \sin(k_2 a) + \sin^2 \beta \sin^2[(k_1 + k_2)a] + 2 \cos \alpha \sin^2 \beta \sin[(k_1 + k_2)a] \sin k_2 a$ with $k_1 = 3k_x/2 - \sqrt{3}k_y/2$ and $k_2 = \sqrt{3}k_y$. In the following, we focus on the most interesting half-filling case. At the half filling, the spectrum is particle-hole symmetric, the $\epsilon_{1\pm}$ ($\epsilon_{2\pm}$) describe the two low (high) energy bands. By solving $\epsilon_{1-}(\mathbf{k}) = 0$ for \mathbf{k} which can be expressed as the roots of a quartic equation, we obtain all the zero modes in analytic forms. For simplicity, we only show the number of the zero modes N_D in Fig. 1(b) for general α, β . Especially, the phase boundary in Fig. 1(b) separating $N_D = 8$ from the $N_D = 4$ zero modes is determined by setting the discriminant of the quartic equation to be zero. As the gauge parameters α and β change from 0 to π , the system undergoes a topological quantum phase transition (TQPT) from the $N_D = 8$ massless Dirac zero modes phase in the yellow regime to a $N_D = 4$ phase in the green regime shown in the Fig. 1(b). Along the dashed line in the Fig. 1(b), the TQPT at $(\alpha = \pi/2, \beta_c = \pi/3)$ is induced by changes in Fermi-surface topologies shown in the Fig. 2(a)-(d).

Classification of the topological quantum phase transition by the magnetic space group. Time-reversal symmetry indicates that the only two Abelian points are $W = \pm 2$ which correspond to no flux and the π flux respectively. For an Abelian flux $\phi = 1/q$, the MSG dictates there are at least q minima in the energy bands^{21,22,42,43}. If there exists Dirac points (zero modes), the MSG dictates there are at least q Dirac points in the energy bands. All the low energy modes near the q Dirac points construct a q dimensional representation of MSG. Due to the time-reversal symmetry, the Dirac points always appear in pairs. When counting the two spin components, each Dirac zero mode was doubly degenerate, so they are counted as $N_D = 4q$ Dirac points. $W = -2$ corresponds to the $q = 2$ case where there are $N_D = 8$ Dirac zero modes. It is the π flux Abelian point locating at the center in the Fig. 1(b). $W = 2$ case corresponds to the $q = 1$ case where there are $N_D = 4$ Dirac zero modes. It is just the graphene case¹⁵ running along the 4 edges of the square in the Fig. 1(b). Obviously, the $W = \pm 2$ have different Fermi surface topologies, so there must be a TQPT separating the two extremes. It is the non-Abelian gauge field which tunes between the two Abelian points landing in the two different topological phases, induces the

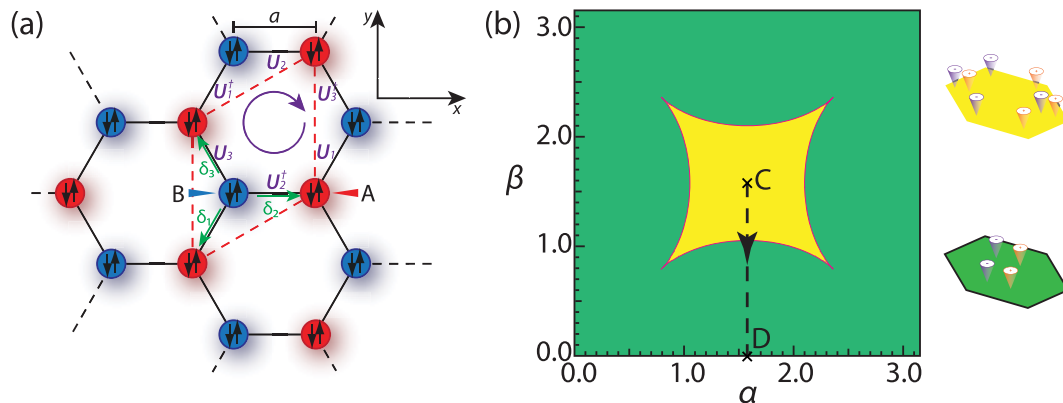


Figure 1 | Lattice geometry and phase diagram. (a) The honeycomb lattice consists of sublattice A (red dots) and sublattice B (blue dots). The up and down arrows represent the spin degrees of freedom. a is the lattice constant. The non-Abelian gauge potentials $U_{1,2,3}$ with directions are displayed on the three links inside the unit cell. (b) The phase diagram of our system as a function of gauge parameters α and β . The yellow (green) region has $N_D = 8$ ($N_D = 4$) Dirac points shown in the insets. The center C point is the π flux Abelian point. The 4 edges of the square belong to the gauge equivalent trivial Abelian point. We investigate the topological quantum phase transition from C point to D point along the dashed line.

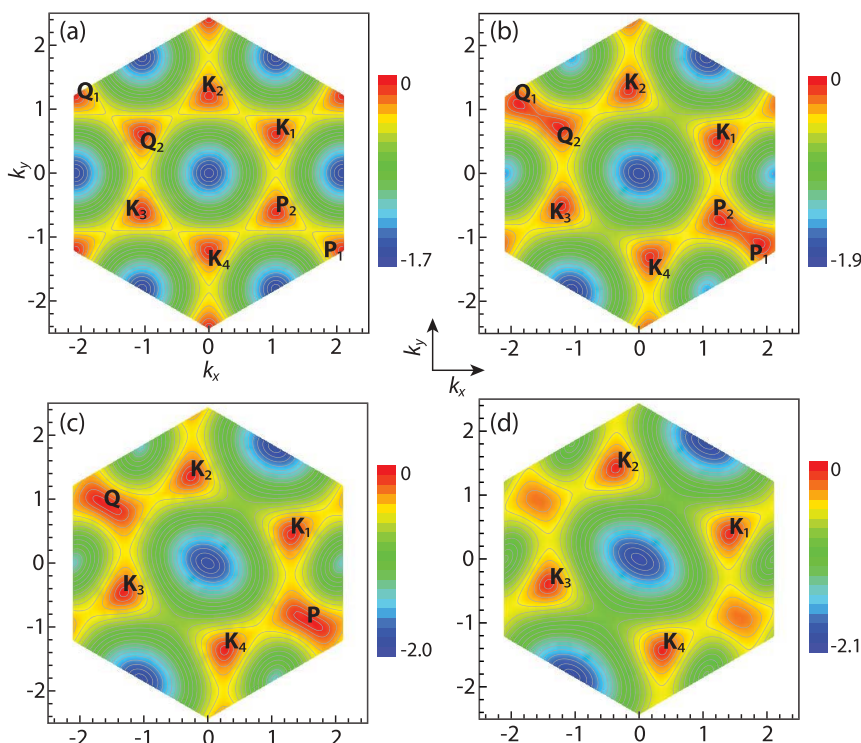


Figure 2 | Topologies of different Fermi surface. The different Fermi surface topologies of the ϵ_{1-} in the 1st Brillouin zone along the dashed line in the Fig. 1(b). (a) The π flux Abelian point $\alpha = \pi/2, \beta = \pi/2$ inside the $N_D = 8$ phase, (b) The $\alpha = \pi/2, \beta = 2\pi/5$ inside the $N_D = 8$ phase, (c) The TQPT at $\alpha = \pi/2, \beta_c = \pi/3$. The two emerging points are located at $\mathbf{P} = \left(\frac{\pi}{2}, -\frac{\pi}{2\sqrt{3}}\right)$ and its time-reversal partner $\mathbf{Q} = -\mathbf{P}$. The four Dirac points are located at $\mathbf{K}_1 = \left(\frac{5\pi}{12}, \frac{\pi}{4\sqrt{3}}\right) = -\mathbf{K}_3, \mathbf{K}_2 = \left(-\frac{\pi}{12}, \frac{\sqrt{3}\pi}{4}\right) = -\mathbf{K}_4$. (d) The $\alpha = \pi/2, \beta = \pi/4$ inside the $N_D = 4$ phase.

changes in Fermi-surface topologies and drives the TQPT. The different phases across the TQPT are characterized by different topologies of Fermi surface²⁶ instead of being classified by different symmetries, so they are beyond Landau's paradigm.

The low energy effective field theory. Based on the physical pictures shown in the Fig. 2, we will derive the effective action near the TQCP at $(\alpha = \pi/2, \beta = \pi/3)$ by the following procedures: (1) Perform an expansion around the critical point $\beta = \beta_c = \pi/3$ and the merging point $\mathbf{P} = \left(\frac{\pi}{2}, -\frac{\pi}{2\sqrt{3}}\right)$ (or equivalently $\mathbf{Q} = -\mathbf{P}$): $H(k_x, k_y, \Delta) = H_p^0 + H_p^x q_x + H_p^y q_y + \frac{1}{2} H_p^{xx} q_x^2 + H_p^\Delta \Delta + \dots$ where the $\mathbf{k} = \mathbf{P} + \mathbf{q}$, $|\mathbf{q}| \ll 1/a$ and the $\Delta \propto \beta_c - \beta$, $|\Delta| \ll \beta_c$. (2) Diagonalize the H_p^0 by the unitary matrix S_p : $S_p^\dagger H_p^0 S_p = \text{diag}(-2t, 2t, 0, 0)$. (3) Perform a counter-clockwise rotation $R_{\pi/6}$ by $\pi/6$ around the point \mathbf{P} to align the q_x along the colliding direction. (4) Separate Hamiltonian into 2×2 blocks in terms of high (low) energy component ϕ_H (ϕ_L), then adiabatically eliminate the high-energy bands around $-2t$ and $2t$ to obtain the effective low-energy two bands Hamiltonian around $\mathbf{q} = 0$ acting on the low energy component ϕ_L . Finally, we obtain the effective Hamiltonian density in term of effective field ϕ_L (See Method section)

$$\mathcal{H}_{\text{eff}}(\mathbf{q}) = \phi_L^\dagger(\mathbf{q}) \left[v \hbar q_y \sigma_x + \left(\frac{\hbar^2 q_x^2}{2m} + \Delta \right) \sigma_y \right] \phi_L(\mathbf{q}), \quad (3)$$

where $v = \frac{3ta}{2\hbar}$, $m = \frac{\hbar^2}{3ta^2}$, $\Delta = \frac{\sqrt{3}t}{2} \left(\frac{\pi}{3} - \beta \right)$ and the effective field $\phi_L = [\psi_1, \psi_2]^T$ is related to the original lattice fields by Eq. (14). When $\Delta < 0$ ($\Delta > 0$), it is in the $N_D = 8$ ($N_D = 4$) phase. We obtain the energy spectrum $\epsilon_{\pm}(\mathbf{q}) = \pm \sqrt{(\hbar^2 q_x^2 / 2m + \Delta)^2 + v^2 \hbar^2 q_y^2}$ is quartic (diffusive) in the colliding direction (q_x direction), but linear

(ballistic) in the perpendicular direction (q_y direction) (Similar anisotropy was observed in the collision between two $U(1)$ gauge vortices of two opposite winding numbers $\mu = \pm 1$ in an expanding universe, see²⁷). Note that the Eq. (3) and Eq. (14) were derived at a fixed gauge, namely along the dashed line in Fig. 1(b), so the position of the merging point \mathbf{P} (or $\mathbf{Q} = -\mathbf{P}$) will change under a gauge transformation. This fact will play very important roles in the experimental detections of the TQPT and will be discussed in details in the last section.

Applying the same procedures to the four $\mathbf{K}_{1,2,3,4}$ points in the Fig. 2, we obtain the usual Dirac-type Hamiltonian for these points. These four Dirac points stay non-critical through the TQPT, so they just contribute to a smooth background across the TQPT. In the following, we subtract the trivial contributions from the $N_D = 4$ “spectator” fermions from all the physical quantities. All the physical quantities should be multiplied by a factor of 2 to take into account the two merging points \mathbf{P} and $\mathbf{Q} = -\mathbf{P}$.

The zero temperature critical exponents. Now we investigate if there are any singular behaviors of the ground state energy across the TQPT. So we calculate the gauge invariant ground state energy density $\mathcal{E}(\Delta) = \frac{1}{4\pi^2} \int d^2 \mathbf{q} \epsilon_{-}(\mathbf{q})$ and extract its non-analytic part. Its 2nd derivative with respect to Δ around the critical point is (See Method section)

$$\mathcal{E}''(\Delta) \sim \begin{cases} -\frac{1}{\pi} \frac{\sqrt{2m}}{\hbar^2 v} \sqrt{\Delta}, & \text{for } \Delta > 0, \\ \frac{\sqrt{2}}{3\pi^2} K\left(\frac{1}{2}\right) \frac{\sqrt{2m}}{\hbar^2 v} \frac{\Delta}{\sqrt{\Delta}}, & \text{for } \Delta < 0, \end{cases} \quad (4)$$

where $K(1/2) \approx 1.85$, $K(z)$ is the complete elliptic integral of the first kind, and Λ is an ultraviolet energy cutoff in the integral. We define $\mathcal{E}''(\Delta) - \mathcal{E}''(\Delta=0) \propto |\Delta|^{-\nu}$, where ν is the critical exponent

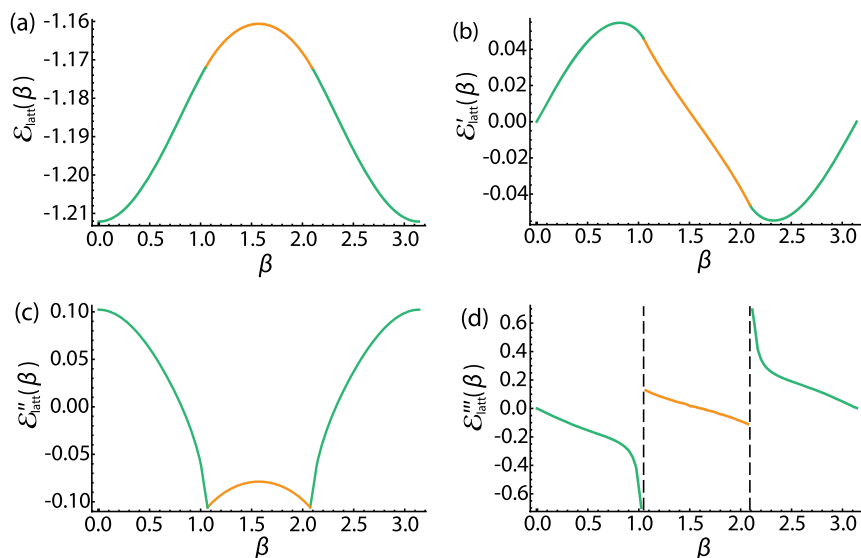


Figure 3 | Ground-state energy density. (a) The ground-state energy density on the lattice scale $\mathcal{E}_{\text{latt}}(\beta)$ as a function of β . (b) The first-order derivative of the ground-state energy density on the lattice scale $\mathcal{E}'_{\text{latt}}(\beta)$ with respect to β . (c) The second-order derivative of the ground-state energy density on the lattice scale $\mathcal{E}''_{\text{latt}}(\beta)$ with respect to β . It shows a cusp when $\beta = \pi/3, 2\pi/3$. (d) The third-order derivative of $\mathcal{E}_{\text{latt}}(\beta)$ with respect to β . It shows discontinuity when $\beta = \pi/3, 2\pi/3$, so the system undergoes a third order topological quantum phase transition.

characterizing the TQPT. Eq. (4) shows that the $\mathcal{E}''(\beta)$ exhibits a cusplike behavior with the critical exponent $\nu_+ = -1/2$ and $\nu_- = -1$. Obviously $\mathcal{E}'''(\Delta)$ diverges like $\Delta^{-1/2}$ as the $\Delta \rightarrow 0^+$, but approaches a constant as the $\Delta \rightarrow 0^-$. The TQPT is 3rd order continuous quantum phase transition. In contrast, most conventional continuous quantum phase transitions are 2nd order.

We numerically calculate the ground-state energy density on the lattice scale $\mathcal{E}_{\text{latt}}(\beta) = \frac{1}{4\pi^2} \int_{\text{BZ}} d^2\mathbf{k} [\epsilon_{1-}(\mathbf{k}) + \epsilon_{2-}(\mathbf{k})]$ and illustrate its 1st, 2nd and 3rd derivatives in Fig. 3. Indeed, the $\mathcal{E}''(\beta)$ exhibits a cusplike behavior near $\beta_c = \pi/3$ in Fig. 3(c). Numerically, we obtain the critical exponent $\nu_+ = -1.0$ and $\nu_- = -0.5$ consistent with our analytical results Eq. (4) (Note that $\Delta \propto \beta_c - \beta$). This fact confirms that the effective Hamiltonian Eq. (3) indeed captures the low energy fluctuations across the TQPT.

Scaling functions at finite temperature. At finite temperature T , the free energy density \mathcal{F} is

$$\mathcal{F} = -2k_B T \int \frac{d^2\mathbf{q}}{(2\pi)^2} \ln(1 + e^{-\epsilon_{\pm}/k_B T}) + \mathcal{E}(\Delta), \quad (5)$$

where the $\mathcal{E}(\Delta)$ is the ground state energy density whose singular behaviors were extracted above. It turns out all the singular behaviors are encoded in $\mathcal{E}(\Delta)$. There is no more singularities at any finite temperature, so the TQPT becomes a crossover at any finite T . Following Ref. 28,29, we can sketch the finite temperature phase diagram in the Fig. 4(b). We can write down the scaling forms of the retarded single particle Green function, the dynamical compressibility and the specific heat

$$G^R(q_x, q_y, \omega) = \frac{\hbar}{k_B T} A_i \left(\frac{\hbar\omega}{k_B T}, \frac{\hbar q_x}{\sqrt{2mk_B T}}, \frac{\hbar v q_y}{k_B T}, \frac{|\Delta|}{k_B T} \right),$$

$$\kappa^R(q_x, q_y, \omega) = \frac{\sqrt{2mk_B T}}{\hbar v} \Phi_i \left(\frac{\hbar\omega}{k_B T}, \frac{\hbar q_x}{\sqrt{2mk_B T}}, \frac{\hbar v q_y}{k_B T}, \frac{|\Delta|}{k_B T} \right), \quad (6)$$

$$C_v = \frac{k_B \sqrt{2m}}{\hbar^2 v} (k_B T)^{3/2} \Psi_i \left(\frac{|\Delta|}{k_B T} \right),$$

where the subscript $i = 1$ ($i = 2$) stands for the $N_D = 4$ ($N_D = 8$) phase. Note the anisotropic scalings in q_x and q_y .

Although the single fermion Green function G^R is gauge dependent, the single particle DOS $\rho(\omega) = -2 \int d\mathbf{q} \Im G^R(\mathbf{q}, \omega)|_{T=0}$

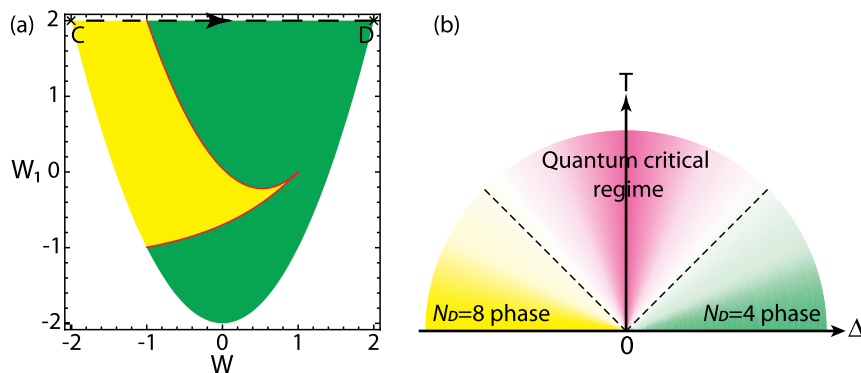


Figure 4 | Finite- T Phase diagram. (a) The gauge-invariant phase diagram in terms of the Wilson loops W and W_1 . The yellow (green) regime is $N_D = 8$ ($N_D = 4$). The dashed line corresponds to the one in Fig. 1(b). (b) Finite- T Phase diagram of the topological quantum phase transition as a function of the flux Δ and the temperature T . There is a topological quantum phase transition at $T = 0, \Delta = 0$. The two dashed lines stand for the crossovers at $T \sim |\Delta|$.



$\frac{\sqrt{2m\hbar\omega}}{\hbar v} \tilde{A}_i \left(\frac{\hbar\omega}{|\Delta|} \right)$ is gauge-invariant. The dynamic compressibility and the specific heat are gauge invariant. The uniform compressibility is given by $\kappa_u = \kappa^R(\mathbf{q} \rightarrow 0, \omega = 0) = \frac{\sqrt{2mk_B T}}{\hbar v} \Omega_i \left(\frac{|\Delta|}{k_B T} \right)$. We have achieved the analytic expressions for $\kappa_u(T)$ and C_v (See method section). Here, we only list their values in the three regimes shown in the Fig. 4(b). For the uniform compressibility, we have

$$\kappa_u = \begin{cases} 0.22 \times \frac{\sqrt{2m}}{\hbar^2 v} \frac{k_B T}{\sqrt{-\Delta}}, & \text{for } \Delta \ll -k_B T, \\ 0.14 \times \frac{\sqrt{2mk_B T}}{\hbar^2 v}, & \text{for } |\Delta| \ll k_B T, \\ 0.22 \times \frac{\sqrt{2m\Delta}}{\hbar^2 v} e^{-\frac{\Delta}{k_B T}}, & \text{for } \Delta \gg k_B T. \end{cases} \quad (7)$$

For the specific heat, we have

$$C_v = \begin{cases} 1.72 \times \frac{k_B \sqrt{2m}}{\hbar^2 v} \frac{(k_B T)^2}{\sqrt{-\Delta}}, & \text{for } \Delta \ll -k_B T, \\ 0.76 \times \frac{k_B \sqrt{2m}}{\hbar^2 v} (k_B T)^{3/2}, & \text{for } |\Delta| \ll k_B T, \\ 0.22 \times \frac{k_B \sqrt{2m}}{\hbar^2 v} \frac{\Delta^{5/2}}{k_B T} e^{-\frac{\Delta}{k_B T}}, & \text{for } \Delta \gg k_B T. \end{cases} \quad (8)$$

From Eq. (7) and Eq. (8), we can form the Wilson ratio between the compressibility and the specific heat $R_W \left(\frac{|\Delta|}{k_B T} \right) = k_B^2 T \kappa_u / C_v = \Omega_i \left(\frac{|\Delta|}{k_B T} \right) / \Psi_i \left(\frac{|\Delta|}{k_B T} \right)$ whose values in the three regimes in the Fig. 4(b) are

$$R_W = \begin{cases} 0.12, & \text{for } \Delta \ll -k_B T, \\ 0.18, & \text{for } |\Delta| \ll k_B T, \\ \left(\frac{k_B T}{\Delta} \right)^2, & \text{for } \Delta \gg k_B T. \end{cases} \quad (9)$$

Effects of interactions and disorders. Now we consider the effects of a Hubbard-like short-range interactions $H_U = U(\sum_{i \in A} n_{i\uparrow} n_{i\downarrow} + \sum_{i \in B} n_{i\uparrow} n_{i\downarrow})$ on the TQPT in Fig. 4(b). It is easy to see H_U is invariant under the local $SU(2)$ gauge transformation, so the Wilson loops W and $W_{1,2,3}$ can still be used to characterize the gauge invariant properties of the interacting system. In this work, we only study the effects of a weak interaction. The low energy form of the H_U was derived in the Method section. Following the standard renormalization group (RG) procedures in^{30,31} (See Method section), we find the scaling dimension of U is $-1/2 < 0$, so it is irrelevant near the TQPT at $\mathbf{P} = -\mathbf{Q}$. It was known^{30,31} that the U , with the scaling dimension $-1 < 0$, is also irrelevant near the Dirac points at $\mathbf{K}_{1,2,3,4}$. So all the leading scaling behaviors will not be changed by the weak short-range interaction. For the quenched disorders Δ_g in the gauge parameters α, β , following the RG procedures in^{30,31}, we find its scaling dimension is $1/2 > 0$, so they are relevant to the TQPT at $\mathbf{P} = -\mathbf{Q}$. It was known^{30,31} that the Δ_g , with the scaling dimension 0, is marginal near the Dirac points at $\mathbf{K}_{1,2,3,4}$. This put some constraints on the stabilities of the laser beams generating the synthetic gauge field. It would be interesting to look at the interplays between the strong repulsive or negative U and the non-Abelian gauge potentials near the TQPT.

Gauge invariance and gauge choices in experimental detections of the topological quantum phase transition. Due to absence of symmetry breaking across a TQPT, it remains experimentally challenging to detect a TQPT. Very recently, the Esslinger's group

in ETH²⁰ has manipulated two time-reversal related Dirac points²³ in the band structure of the ultracold Fermi gas of ⁴⁰K atoms by tuning the hopping anisotropies in a honeycomb optical lattice and identified the two Dirac zero modes via the momentum resolved interband transitions (MRIT). As to be stressed in the discussion section, in the present synthetic gauge potential problem, the positions of the Dirac points and the two merging points $\mathbf{P} = -\mathbf{Q}$ shown in Fig. 2 are gauge-dependent, so can be shifted by a gauge transformation. We expect that by tuning the orientations and intensity profiles of the incident laser beams, various gauges corresponding to the same Wilson loops W and $W_{1,2,3}$ can be experimentally generated. So the MRIT measurement can still be used to detect the positions of the two merging points, the Dirac points and the TQPT at a fixed gauge. Then it can be repeatedly performed at various other experimentally chosen gauges to monitor the changes of these positions as the gauge changes. However, the number of Dirac points N_D in the two different topological phases and the density of states $\rho(\omega)$ are gauge invariant. In principle, the number of Dirac points N_D can be measured by Hall conductivities. The $\rho(\omega)$ can be measured by the modified RF-spectroscopy^{32,33}. There are previous experimental measurements on the specific heat of a strongly interacting Fermi gas³⁴. Very recently, Ku *et al.*³⁵ observed the superfluid phase transition in a strongly interacting ⁶Li Fermi gas by presenting precise measurements of the compressibility κ_u and the heat capacity C_v . It was demonstrated that the presence of the optical lattice does not present technical difficulties in the compressibility measurements^{36,37}, therefore these measurements^{34,35} can be used to detect the uniform compressibility Eq. (7), the specific heat Eq. (8) and the Wilson ratio in Eq. (9). The various kinds of light and atom scattering methods discussed in^{29,38} is particularly suitable to detect the dynamic compressibility in Eq. (6).

Discussion

In this work, we investigate the topological quantum phase transition (TQPT) of fermions hopping on a honeycomb lattice in the presence of a synthetic non-Abelian gauge potential. The two Abelian phases $W = \pm 2$ are connected by the TQPT tuned by the non-abelian gauge parameters. We especially distinguish between gauge invariant and gauge dependent quantities across the TQPT. In fact, the ‘‘Abelian path’’ discussed in²⁴ is just equivalent to the Abelian point $W = 2$ in Fig. 1(b). The positions of the Dirac cones along the ‘‘Abelian path’’ shown in Fig. 7 in Ref. 24 are gauge dependent quantities and can be shifted by gauge transformations, but the ground state energy density $\mathcal{E}(\Delta)$ is gauge invariant. In the TQPT in an anisotropic honeycomb lattice studied in^{20,23}, there is no synthetic gauge potential, the collision is between two time-reversal related Dirac points, so the merging points can only be located at half of a reciprocal lattice. Here, the collision shown in Fig. 2 is *not* between two time-reversal related Dirac points. The locations of the two merging points $\mathbf{P} = -\mathbf{Q}$ and the four Dirac points $\mathbf{K}_1 = -\mathbf{K}_3, \mathbf{K}_2 = -\mathbf{K}_4$ are gauge dependent. But the total number of Dirac points N_D , the colliding process and the TQPT shown in Fig. 2 are gauge invariant. In the 3 dimensional TQPT driven by a Zeeman field discussed in²⁶, there is no synthetic gauge potential either, the time-reversal symmetry is broken by the Zeeman field, the collision is between one left handed and one right-handed Weyl fermions at 3d. At the BCS mean field level, the critical effective field theory is a 4-component Dirac fermion at 3d which is different from Eq. (3). So it is a different class of TQPT than that discussed in this paper. As stressed in this work, in principle, the cold atom experiments³⁻¹⁰ can generate various gauges corresponding to the same W and $W_{1,2,3}$, so both gauge invariant and gauge dependent quantities can be detected in such experiments. In sharp contrast, only gauge-invariant quantities can be detected in condensed matter experiments (For the discussions on gauge invariant Green functions in high temperature superconductors, see^{39-41,44}). Indeed, the cold



atom experiments of generating synthetic gauge potentials on an optical lattice can lead to new types of TQPT and also offer new opportunities to explore both gauge invariant and non-gauge invariant quantities through the TQPT.

Methods

Derivation of low-energy effective Hamiltonian. We first find the energy bands by diagonalizing Hamiltonian matrix [Eq. (1)] at the critical point $\beta_c = \pi/3$ and the merging point $\mathbf{P} = \left(\frac{\pi}{2}, -\frac{\pi}{2\sqrt{3}}\right)$. The result is $S_p^\dagger H(\mathbf{P}) S_p = (2t, -2t, 0, 0)$ and $\Phi_p = S_p^\dagger \Psi_p$, where

$$S_p = \begin{pmatrix} i\frac{1-\sqrt{3}}{4} & i\frac{-1+\sqrt{3}}{4} & 0 & -\frac{1+\sqrt{3}}{2\sqrt{2}} \\ -i\frac{1+\sqrt{3}}{4} & i\frac{1+\sqrt{3}}{4} & 0 & \frac{-1+\sqrt{3}}{2\sqrt{2}} \\ \frac{1+\sqrt{3}}{4} & \frac{1+\sqrt{3}}{4} & \frac{1-\sqrt{3}}{2\sqrt{2}} & 0 \\ \frac{-1+\sqrt{3}}{4} & \frac{-1+\sqrt{3}}{4} & \frac{1+\sqrt{3}}{2\sqrt{2}} & 0 \end{pmatrix}. \quad (10)$$

Now we perform an expansion of the Hamiltonian around the β_c and also around the merging point \mathbf{P} by writing $\mathbf{k} = \mathbf{P} + \mathbf{q}'$ with $|\mathbf{q}'| \ll 1/a$. Furthermore, we make a $\pi/6$

counter-clockwise rotation $\begin{pmatrix} q_x \\ q_y \end{pmatrix} = R_{\pi/6} \begin{pmatrix} q'_x \\ q'_y \end{pmatrix} = \begin{pmatrix} \frac{\sqrt{3}}{2} & \frac{1}{2} \\ -\frac{1}{2} & \frac{\sqrt{3}}{2} \end{pmatrix} \begin{pmatrix} q'_x \\ q'_y \end{pmatrix}$. Then, we

separate the 4×4 Hamiltonian into 2×2 blocks as $\tilde{H}(k) = S_p^\dagger H(k) S_p = \begin{pmatrix} H_H & H_C \\ H_C & H_L \end{pmatrix}$ and $\Phi(k) = S_p^\dagger \Psi(k) = (\phi_H, \phi_L)$, where the upper left diagonal block H_H is the high-energy component, the lower right diagonal block H_L is the low-energy component, the off-diagonal blocks H_C is the coupling between the two components and Φ is the corresponding field operator. In the path integral, the quantum partition function is

$$Z = Z_0^{-1} \int \mathcal{D}[\bar{\Phi}, \Phi] e^{i \sum_{\omega, \mathbf{k}} \bar{\Phi} (i\omega - \tilde{H}(k)) \Phi}. \quad (11)$$

In order to obtain low-energy EFT, we integrate out high-energy component ϕ_H

$$Z = Z_0^{-1} \int \mathcal{D}[\bar{\phi}_L, \phi_L] e^{i \sum_{\omega, \mathbf{k}} \mathcal{L}_{\text{eff}}[\bar{\phi}_L, \phi_L]}, \quad (12)$$

where $\mathcal{L}_{\text{eff}} = \phi_L^\dagger [i\omega - H_L - H_C^\dagger (i\omega - H_H)^{-1} H_C] \phi_L$. Since $|\omega| \ll t$ and $H_H \propto t$, we can expand $(\omega - H_H)^{-1}$ in t^{-1} and keep only terms up to t^{-1} . After Legendre transform, we obtain the effective two bands Hamiltonian as $\mathcal{H}_{\text{eff}} = \phi_L^\dagger [H_L - H_C^\dagger H_H^{-1} H_C] \phi_L$. After keeping only lowest order derivative terms, we obtain Eq. (3)

$$\mathcal{H}_{\text{eff}}(\mathbf{q}) = \phi_L^\dagger(\mathbf{q}) \left[v\hbar q_y \sigma_x + \left(\frac{\hbar^2 q_x^2}{2m} + \Delta \right) \sigma_y \right] \phi_L(\mathbf{q}), \quad (13)$$

where $v = \frac{3ta}{2\hbar}$, $m = \frac{\hbar^2}{3ta^2}$, $\Delta = \frac{\sqrt{3}t}{2} \left(\frac{\pi}{3} - \beta \right)$. Relation between effective field $\phi_L = (\phi_1, \phi_2)^T$ and original lattice fields is give by the unitary matrix S_p as

$$\begin{aligned} \phi_1(\mathbf{q}) &= \frac{1-\sqrt{3}}{2\sqrt{2}} c_B(\mathbf{k}\uparrow) + \frac{1+\sqrt{3}}{2\sqrt{2}} c_B(\mathbf{k}\downarrow), \\ \phi_2(\mathbf{q}) &= -\frac{1+\sqrt{3}}{2\sqrt{2}} c_A(\mathbf{k}\uparrow) + \frac{-1+\sqrt{3}}{2\sqrt{2}} c_A(\mathbf{k}\downarrow), \end{aligned} \quad (14)$$

where $\mathbf{q} = R_{\pi/6}(\mathbf{k} - \mathbf{P})$.

Zero temperature critical exponents. The gauge invariant ground state energy

density $\mathcal{E}(\Delta)$ of Eq. (3) can be written as: $\mathcal{E}(\Delta) = \frac{1}{4\pi^2} \int_{-\Lambda_x}^{\Lambda_x} dq_x \int_{-\Lambda_y}^{\Lambda_y} dq_y \epsilon - (q_x, q_y; \Delta)$, where Λ_x and Λ_y are ultraviolet moment cutoff for q_x and q_y respectively. To evaluate such a double integral, we first integrate with respect to q_y variable, $\int_{-\Lambda_y}^{\Lambda_y} dq_y \epsilon = f_1(q_x, \Delta) + f_2(q_x, \Delta) + f_3(q_x, \Delta)$, where we have defined $f_1(q_x, \Delta) = -\Lambda_y \sqrt{\left(\frac{\hbar^2 q_x^2}{2m} + \Delta \right)^2 + v^2 \hbar^2 \Lambda_y^2}$, $f_2(q_x, \Delta) = \frac{1}{2v\hbar} \left(\frac{\hbar^2 q_x^2}{2m} + \Delta \right)^2 \ln \left(\frac{\hbar^2 q_x^2}{2m} + \Delta \right)$, and $f_3(q_x, \Delta) = -\frac{1}{v\hbar} \left(\frac{\hbar^2 q_x^2}{2m} + \Delta \right)^2 \ln \left[v\hbar \Lambda_y + \sqrt{\left(\frac{\hbar^2 q_x^2}{2m} + \Delta \right)^2 + v^2 \hbar^2 \Lambda_y^2} \right]$. Due to $\Lambda_y \neq 0$ feature, singular behaviors are only hidden in f_2 . In the next step, we need to handle the following integration: $I_2(\Delta) = \int_{-\Lambda_x}^{\Lambda_x} dq_x f_2(q_x, \Delta)$.

Let us take derivative before integration, since we have the following simple relation $\frac{\partial^2}{\partial \Delta^2} f_2(q_x, \Delta) = \frac{1}{v\hbar} \left[3 + \ln \left(\frac{\hbar^2 q_x^2}{2m} + \Delta \right) \right]$. For the $\Delta > 0$ case, we obtain

$$\frac{\partial^2}{\partial \Delta^2} I_2 = \frac{\sqrt{2m}}{v\hbar^2} \left[-2 \frac{\hbar \Lambda_x}{\sqrt{2m}} + 4 \frac{\hbar \Lambda_x}{\sqrt{2m}} \ln \left(\frac{\hbar \Lambda_x^2}{2m} + \Delta \right) + 8\sqrt{\Delta} \arctan \frac{\hbar \Lambda_x}{\sqrt{2m\Delta}} \right]; \quad (15)$$

for the $\Delta < 0$ case, we obtain

$$\frac{\partial^2}{\partial \Delta^2} I_2 = \frac{\sqrt{2m}}{v\hbar^2} \left[-2 \frac{\hbar \Lambda_x}{\sqrt{2m}} + 4 \frac{\hbar \Lambda_x}{\sqrt{2m}} \ln \left(\frac{\hbar \Lambda_x^2}{2m} + \Delta \right) - 8\sqrt{-\Delta} \frac{\sqrt{-2m\Delta}}{\hbar \Lambda_x} \right]. \quad (16)$$

Combining Eq. (15) and Eq. (16), we have following result for $\partial^2 I_2 / \partial \Delta^2$ around the critical point $\Delta = 0$,

$$\frac{\partial^2}{\partial \Delta^2} I_2 \sim \begin{cases} -4\pi \frac{\sqrt{2m}}{v\hbar^2} \sqrt{\Delta}, & \text{for } \Delta > 0 \\ 8 \frac{\sqrt{2m} \sqrt{2m\Delta}}{v\hbar^2 \hbar \Lambda_x}. & \text{for } \Delta < 0 \end{cases} \quad (17)$$

Notice that f_1 and f_2 also have linear contributions, carefully adding these contributions we arrive at the final expression Eq. (4)

$$\mathcal{E}''(\Delta) \sim \begin{cases} -\frac{1}{\pi} \frac{\sqrt{2m}}{v\hbar^2} \sqrt{\Delta}, & \text{for } \Delta > 0 \\ \frac{\sqrt{2}}{3\pi^2} K\left(\frac{1}{2}\right) \frac{\sqrt{2m}}{v\hbar^2} \frac{\Delta}{\sqrt{\Delta}}, & \text{for } \Delta < 0 \end{cases} \quad (18)$$

where $K(z)$ is the complete elliptic integral of the first kind, $K(1/2) \approx 1.85$ and

$\Lambda \sim \sqrt{\left(\frac{\hbar \Lambda_x^2}{2m} \right)^2 + v^2 \hbar^2 \Lambda_y^2}$ is an ultraviolet energy cutoff.

Finite temperature effect. From Eq. (5) we can directly obtain specific heat as

$$C_v = -T \frac{\partial^2 \mathcal{F}}{\partial T^2} = 2 \int \frac{d\mathbf{q}^2}{(2\pi)^2} \frac{e^{\epsilon + / (k_B T)}}{(e^{\epsilon + / (k_B T)} + 1)^2} \frac{\epsilon^2}{k_B^2 T^2}. \quad (19)$$

From Eq. (3), we can get the fermion Green function

$$G(\mathbf{q}, i\omega_n) = \sum_{s=\pm} \frac{P_s(\mathbf{q})}{i\hbar\omega_n - \epsilon_s(\mathbf{q})}, \quad P_s(\mathbf{q}) = \frac{1}{2} \left[\sigma_0 + s \frac{v\hbar q_y}{|\epsilon_s(\mathbf{q})|} \sigma_x + s \frac{\hbar^2 q_x^2 / (2m) + \Delta}{|\epsilon_s(\mathbf{q})|} \sigma_y \right], \quad (20)$$

where $P_s(\mathbf{q})$ are the project operators for the $s = \pm$ band. The dynamical compressibility can be expressed as

$$\kappa(\mathbf{p}, i\omega_n) = -k_B T \sum_{\mathbf{q}, i\nu_n} \left[\mathcal{G}^{(0)}(\mathbf{q} + \mathbf{p}, i\omega_n + i\nu_n) \mathcal{G}^{(0)}(\mathbf{q}, i\nu_n) \right]. \quad (21)$$

Working out the Matsubara frequency summation and trace, we obtain

$$\kappa(\mathbf{p}, i\omega_n) = \sum_{\mathbf{q}, s, s'} M_{ss'}(\mathbf{p}, \mathbf{q}) \frac{n_F(\epsilon_s(\mathbf{q})) - n_F(\epsilon_s(\mathbf{q} + \mathbf{p}))}{i\omega_n - \epsilon_s(\mathbf{q} + \mathbf{p}) + \epsilon_s(\mathbf{q})}, \quad (22)$$

where n_F is Fermi distribution function and $M_{ss'}(\mathbf{p}, \mathbf{q})$ is

$$M_{ss'}(\mathbf{p}, \mathbf{q}) = \frac{1}{2} \left(1 + ss' \frac{v^2 \hbar^2 q_y (q_y + p_y)}{|\epsilon_s(\mathbf{q}) \epsilon_{s'}(\mathbf{q} + \mathbf{p})|} + ss' \frac{\left(\frac{\hbar^2 q_x^2}{2m} + \Delta \right) \left[\frac{\hbar^2 (q_x + p_x)^2}{2m} + \Delta \right]}{|\epsilon_s(\mathbf{q}) \epsilon_{s'}(\mathbf{q} + \mathbf{p})|} \right). \quad (23)$$

Explicit evaluations of Eq. (19) and analytical continuations in Eq. (20), (22) lead to the explicit forms of the scaling functions in the retarded single particle Green function, the dynamical compressibility and the specific heat in Eq. (6). The analytic expressions for the scaling function Ψ_i in C_v and Ω_i in $\kappa_u(T)$ are found to be:

$$\begin{aligned} \Psi_1(s) &= \frac{4}{\pi^2} \int_{s/2}^{\infty} dx \frac{x^{5/2}}{\cosh^2 x} K\left(\sqrt{\frac{2x-s}{4x}}\right), \\ \Psi_2(s) &= \frac{4}{\pi^2} \int_0^{s/2} dx \frac{2x^3}{\sqrt{2x+s} \cosh^2 x} K\left(\sqrt{\frac{4x}{2x+s}}\right) + \frac{4}{x^2} \int_{s/2}^{\infty} dx \frac{x^{5/2}}{\cosh^2 x} K\left(\sqrt{\frac{2x+s}{4x}}\right), \\ \Omega_1(s) &= \frac{1}{\pi^2} \int_{s/2}^{\infty} dx \frac{\sqrt{x}}{\cosh^2 x} K\left(\sqrt{\frac{2x-s}{4x}}\right), \\ \Omega_2(s) &= \frac{1}{\pi^2} \int_0^{s/2} dx \frac{2x}{\sqrt{2x+s} \cosh^2 x} K\left(\sqrt{\frac{4x}{2x+s}}\right) + \frac{1}{\pi^2} \int_{s/2}^{\infty} dx \frac{\sqrt{x}}{\cosh^2 x} K\left(\sqrt{\frac{2x+s}{4x}}\right). \end{aligned} \quad (24)$$

where $K(z)$ denote the complete elliptic integrals of the first kind. Their values in the three regimes shown in the Fig. 4(b) are listed in Eq. (7), (8).

Renormalization group analysis of short-range interaction and quenched disorders. We can write Eq. (3) in the action form:



$$S_0[\phi_L] = \int dq_x dq_y d\omega \phi_L^\dagger [i\omega + v\hbar q_y \sigma_x + \left(\frac{\hbar^2 q_x^2}{2m} + \Delta\right) \sigma_y] \phi_L(q_x, q_y, \omega) \quad (25)$$

It is easy to see the canonical dimension in (q_x, q_y, ω) space is $[\phi_L(q_x, q_y, \omega)] = -7/4$. Fourier transforming to (x, y, τ) space leads to $[\phi_L(x, y, \tau)] = 3/4$.

Following the same procedures as in the derivation of low-energy effective Hamiltonian, expanding the Hubbard interaction H_U around the merging point $\mathbf{P} = -\mathbf{Q}$ and projecting into the low energy component ϕ_L , we obtain the low energy form of the Hubbard interaction: $S_U[\phi_L] = U \int dx dy d\tau [\phi_L^\dagger(x, y, \tau) \phi_L(x, y, \tau)]^2$. It is easy to see the canonical dimension of the short range interaction $[U] = -1/2 < 0$, so it is irrelevant near the TQPT. This is contrasted with the canonical dimension $[U]_D = -1 < 0$ of the short range interaction near the 4 Dirac points $\mathbf{K}_{1,2,3,4}$ ^{30,31}.

Now we consider quenched disorders in the gauge parameter β . As indicated in Eq. (3), at a fixed gauge along the dashed line in Fig. 1(b), the tuning parameter $\Delta \sim \pi/3 - \beta$, so the randomness in the gauge parameter β will lead to the randomness in Δ . Similarly, the randomness in the gauge parameters α and γ will also lead to random distributions in Δ in other gauges. We assume all the quenched disorder satisfies a Gaussian distribution with zero mean and variance $\Delta_g: \langle g(\mathbf{r})g(\mathbf{r}') \rangle = \Delta_g \delta(\mathbf{r} - \mathbf{r}')$ where g stands for the gauge parameters α, β, γ . Averaging over the disorders lead to: $S_g[\phi_L] = \Delta_g \int dx dy d\tau d\tau' [\phi_L^\dagger(x, y, \tau) \sigma_\mu \phi_L(x, y, \tau')]^2 [\phi_L^\dagger(x, y, \tau') \sigma_\mu \phi_L(x, y, \tau')]^2$ with $\mu = x, y, z$. By using the canonical dimension $[\phi_L(x, y, \tau)] = 3/4$, one can see the canonical dimension of the short range disorder $[\Delta_g] = 1/2 > 0$, so it is relevant near the TQPT. This is contacted with the canonical dimension $[\Delta_g]_D = 0$ of the short range disorders near the 4 Dirac points^{30,31} $\mathbf{K}_{1,2,3,4}$ which is marginal. A RG analysis at one loop is needed to determine its fate^{30,31}.

- Berry, M. V. Quantal Phase Factors Accompanying Adiabatic Changes. *Proc. R. Soc. Lond. A* **392**, 45 (1984).
- Wilczek, F. & Zee, A. Appearance of Gauge Structure in Simple Dynamical Systems. *Phys. Rev. Lett.* **52**, 2111 (1984).
- Lin, Y. J. *et al.* Bose-Einstein Condensate in a Uniform Light-Induced Vector Potential. *Phys. Rev. Lett.* **102**, 130401 (2009).
- Lin, Y. J., Compton, R. L., Jiménez-García, K., Porto, J. V. & Spielman, I. B. Synthetic magnetic fields for ultracold neutral atoms. *Nature* **462**, 628 (2009).
- Lin, Y. J. *et al.* A synthetic electric force acting on neutral atoms. *Nature Physics* **7**, 531 (2011).
- Lin, Y. J., Jiménez-García, K. & Spielman, I. B. Spin-orbit-coupled Bose-Einstein condensates. *Nature* **471**, 83 (2011).
- Sau, J. D., Sensarma, R., Powell, S., Spielman, I. B. & Das Sarma, S. Chiral Rashba spin textures in ultracold Fermi gases. *Phys. Rev. B* **83**, 140510 (2011).
- Anderson, B. M., Juzeliūnas, G., Galitski, V. M. & Spielman, I. B. Synthetic 3D Spin-Orbit Coupling. *Phys. Rev. Lett.* **108**, 235301 (2012).
- Xiao, D., Chang, M.-C. & Niu, Q. Berry phase effects on electronic properties. *Rev. Mod. Phys.* **82**, 1959 (2010).
- Dalibard, J., Gerbier, F., Juzeliūnas, G. & Öhberg, P. Colloquium: Artificial gauge potentials for neutral atoms. *Rev. Mod. Phys.* **83**, 1523 (2011).
- Bermudez, A. *et al.* Wilson Fermions and Axion Electrodynamics in Optical Lattices. *Phys. Rev. Lett.* **105**, 190404 (2010).
- Mazza, L. *et al.* An optical-lattice-based quantum simulator for relativistic field theories and topological insulators. *New J. Phys.* **14**, 015007 (2012).
- Hasan, M. Z. & Kane, C. L. Colloquium: Topological insulators. *Rev. Mod. Phys.* **82**, 3045 (2010).
- Qi, X. L. & Zhang, S. C. Topological insulators and superconductors. *Rev. Mod. Phys.* **83**, 1057 (2011).
- Castro Neto, A. H., Guinea, F., Peres, N. M. R., Novoselov, K. S. & Geim, A. K. The electronic properties of graphene. *Rev. Mod. Phys.* **81**, 109 (2009).
- Vozmediano, M. A. H., Katsnelson, M. I. & Guinea, F. Gauge fields in graphene. *Phys. Rep.* **496**, 109 (2010).
- Liu, X.-J., Jiang, L., Pu, H. & Hu, H. Probing Majorana fermions in spin-orbit-coupled atomic Fermi gases. *Phys. Rev. A* **85**, 021603 (2012).
- Seo, K., Han, L. & Sá de Melo, C. A. R. Topological phase transitions in ultracold Fermi superfluids: The evolution from Bardeen-Cooper-Schrieffer to Bose-Einstein-condensate superfluids under artificial spin-orbit fields. *Phys. Rev. A* **85**, 033601 (2012).
- Soltan-Panahi, P. *et al.* Multi-component quantum gases in spin-dependent hexagonal lattices. *Nature Physics* **7**, 434 (2011).
- Tarruell, L., Greif, D., Uehlinger, T., Jotzu, G. & Esslinger, T. Creating, moving and merging Dirac points with a Fermi gas in a tunable honeycomb lattice. *Nature* **483**, 302 (2012).
- Jiang, L. & Ye, J. The mobility of dual vortices in honeycomb, square, triangular, Kagome and dice lattices. *J. Phys.: Condens. Matter* **18**, 6907 (2006).
- Ye, J. Duality, magnetic space group and their applications to quantum phases and phase transitions on bipartite lattices in several experimental systems. *Nucl. Phys. B* **805**, 418 (2008).

- Montambaux, G., Piéchon, F., Fuchs, J.-N. & Goerbig, M. O. Merging of Dirac points in a two-dimensional crystal. *Phys. Rev. B* **80**, 153412 (2009).
- Bermudez, A., Goldman, N., Kubasiak, A., Lewenstein, M. & Martin-Delgado, M. A. Topological phase transitions in the non-Abelian honeycomb lattice. *New J. Phys.* **12**, 033041 (2010).
- Wen, X. G. *Quantum Field Theory of Many-body Systems* (Oxford University Press, 2004).
- Volovik, G. E. *The Universe in a Helium Droplet* (Oxford University Press, USA, 2003).
- Ye, J. & Brandenberger, R. H. The formation and evolution of U(1) gauged vortices in an expanding universe. *Nucl. Phys. B* **49**, 149 (1990).
- Chubukov, A. V., Sachdev, S. & Ye, J. Theory of two-dimensional quantum Heisenberg antiferromagnets with a nearly critical ground state. *Phys. Rev. B* **49**, 11919 (1994).
- Ye, J., Zhang, K. Y., Li, Y., Chen, Y. & Zhang, W. P. Optical Bragg, atomic Bragg and cavity QED detections of quantum phases and excitation spectra of ultracold atoms in bipartite and frustrated optical lattices. *Ann. of Phys.* **328**, 103 (2013).
- Ye, J. & Sachdev, S. Coulomb Interactions at Quantum Hall Critical Points of Systems in a Periodic Potential. *Phys. Rev. Lett.* **80**, 5409 (1998).
- Ye, J. Effects of weak disorders on quantum Hall critical points. *Phys. Rev. B* **60**, 8290 (1999).
- Jiang, L., Baksmaty, L. O., Hu, H., Chen, Y. & Pu, H. Single impurity in ultracold Fermi superfluids. *Phys. Rev. A* **83**, 061604 (2011).
- Stewart, J. T., Gaebler, J. P. & Jin, D. S. Using photoemission spectroscopy to probe a strongly interacting Fermi gas. *Nature*, **454**, 744 (2008).
- Kinast, J. *et al.* Heat capacity of a strongly interacting Fermi gas. *Science* **25**, 1296 (2005).
- Ku, M. J. H., Sommer, A. T., Cheuk, L. W. & Zwierlein, M. W. Revealing the superfluid lambda transition in the universal thermodynamics of a unitary Fermi gas. *Science* **335**, 563 (2012).
- Gemelke, N., Zhang, X., Hung, C.-L. & Chin, C. In situ observation of incompressible Mottinsulating domains in ultracold atomic gases. *Nature* **460**, 995 (2009).
- Hung, C.-L., Zhang, X., Gemelke, N. & Chin, C. Observation of scale invariance and universality in two-dimensional Bose gases. *Nature* **470**, 236 (2011).
- Ye, J. *et al.* Light-scattering detection of quantum phases of ultracold atoms in optical lattices. *Phys. Rev. A* **83**, 051604 (2011).
- Ye, J. Thermally Generated Vortices, Gauge Invariance, and Electron Spectral Function in the Pseudogap Regime. *Phys. Rev. Lett.* **87**, 227003 (2001).
- Ye, J. Quantum fluctuation generated vortices, dual singular-gauge transformation, and zero-temperature transition from d -wave superconductor to underdoped regime. *Phys. Rev. B* **65**, 214505 (2002).
- Ye, J. Gauge-invariant Green function in 2 + 1 dimensional quantum electrodynamics. *Phys. Rev. B* **67**, 115104 (2003).
- Chen, Y. & Ye, J. Characterizing boson orders in lattices by vortex degree of freedoms. *Philos. Mag.* **92**, 4484 (2012).
- Ye, J. & Chen, Y. Quantum phases, Supersolids and quantum phase transitions of interacting bosons in frustrated lattices. *Nucl. Phys. B* **869**, 242 (2013).
- Ye, J. Gauge-invariant Green function in 3+1 dimensional QED and 2+1 dimensional Chern-Simon theory. *J. Phys.: Condens. Matter* **16**, 4465 (2004).

Acknowledgements

We acknowledge helpful discussions with Y.-X. Yu, S.-J. Jiang, H. Pu, Carlos A. R. Sá de Melo, Alexei M. Tsvelik and S. P. Kou. This work was supported by the NKBRSC under Grants No. 2010CB922904, No. 2011CB921502, and No. 2012CB821300, NSFC under Grants No. 10934010. F. Sun and J. Ye are supported by NSF-DMR-1161497, NSFC-11074173, -11174210, Beijing Municipal Commission of Education under Grant No. PHR201107121.

Author contributions

All authors planned and designed theoretical numerical studies. All contributed in completing the paper.

Additional information

Competing financial interests: The authors declare no competing financial interests.

How to cite this article: Sun, F., Yu, X., Ye, J., Fan, H. & Liu, W. Topological Quantum Phase Transition in Synthetic Non-Abelian Gauge Potential: Gauge Invariance and Experimental Detections. *Sci. Rep.* **3**, 2119; DOI:10.1038/srep02119 (2013).



This work is licensed under a Creative Commons Attribution 3.0 Unported license. To view a copy of this license, visit <http://creativecommons.org/licenses/by/3.0>